



**FENDT**

---

Werkstatthandbuch

---

Workshopmanual

---

Manuel d'atelier

---

Manual de taller

---

Manuale per l'officina

---

Werkplaatshandboek

---

---

***FENDT 900 Vario COM III***

---

X 990.005.057.012

**4**



**FENDT**

<b>A</b>	General
<b>B</b>	Faults
<b>C</b>	Documents and Diagrams
<b>D</b>	Component location
<b>E</b>	Testing
<b>F</b>	Setting and Calibration
<b>G</b>	Repair
<b>H</b>	Service – Info

# 9610

Hydraulic equipment/central control block (ZSB)

## FENDT 900 Vario - COM III

### Volume 1

0000	Overall system/tractor
1005	Overall system/transmission
1010	Transmission/differential
1015	Transmission/axle drive
1050	Transmission/housing
1070	Transmission / Brake system
1080	Transmission/drive train
1200	Transmission/front PTO
1220	Transmission / Live PTO
1320	Transmission/front wheel drive
2000	Overall system/engine
2010	Engine/cylinder head
2050	Engine/cooling
2060	Engine/fuel system
2210	Engine/crankcase
2312	Engine/lubrication
2400	Engine/exhaust system
2712	Engine/injectors
3000	Overall system/front axle
3120	Front axle/steering cylinder
3180	Front axle/cardan shaft

### Volume 2

4000	Overall system/steering
4090	Steering system / hydraulic steering unit
5030	Vehicle layout/operator's seat
5500	Overall system/air conditioning system
8100	Overall system/cab
8610	Power lift/EPC electro-hydraulic control
8631	Power lift/hydraulic lift
8800	Overall system/compressed air system

### Volume 3

9000	Overall system/electrical system
9015	Electrical system/starter lockout

## FENDT 900 Vario - COM III

### Volume 4

<b>9410</b>	<b>Hydraulic pump installation/LS pump</b>
<b>9430</b>	<b>Hydraulic pump installation/steering pump</b>
<b>9534</b>	<b>Hydraulic piping/"Rüfa"reverse operation</b>
<b>9600</b>	<b>Overall system/hydraulic equipment</b>
<b>9605</b>	<b>Hydraulic equipment/hydraulic connections</b>
<b>9610</b>	<b>Hydraulic equipment/central control block (ZSB)</b>
<b>9620</b>	<b>Hydraulic equipment/valve fitting</b>
<b>9700</b>	<b>Overall system/electronics</b>
<b>9920</b>	<b>Service/special tools</b>
<b>9975</b>	<b>Service/SERDIA - Deutz engine diagnostics program</b>

# **9610 Hydraulic equipment/central control block (ZSB)**

<b>A</b>	<b>General. . . . .</b>	<b>5</b>
----------	-------------------------	----------



## A General

1	Central control block.....	7
---	----------------------------	---





## 1 Central control block

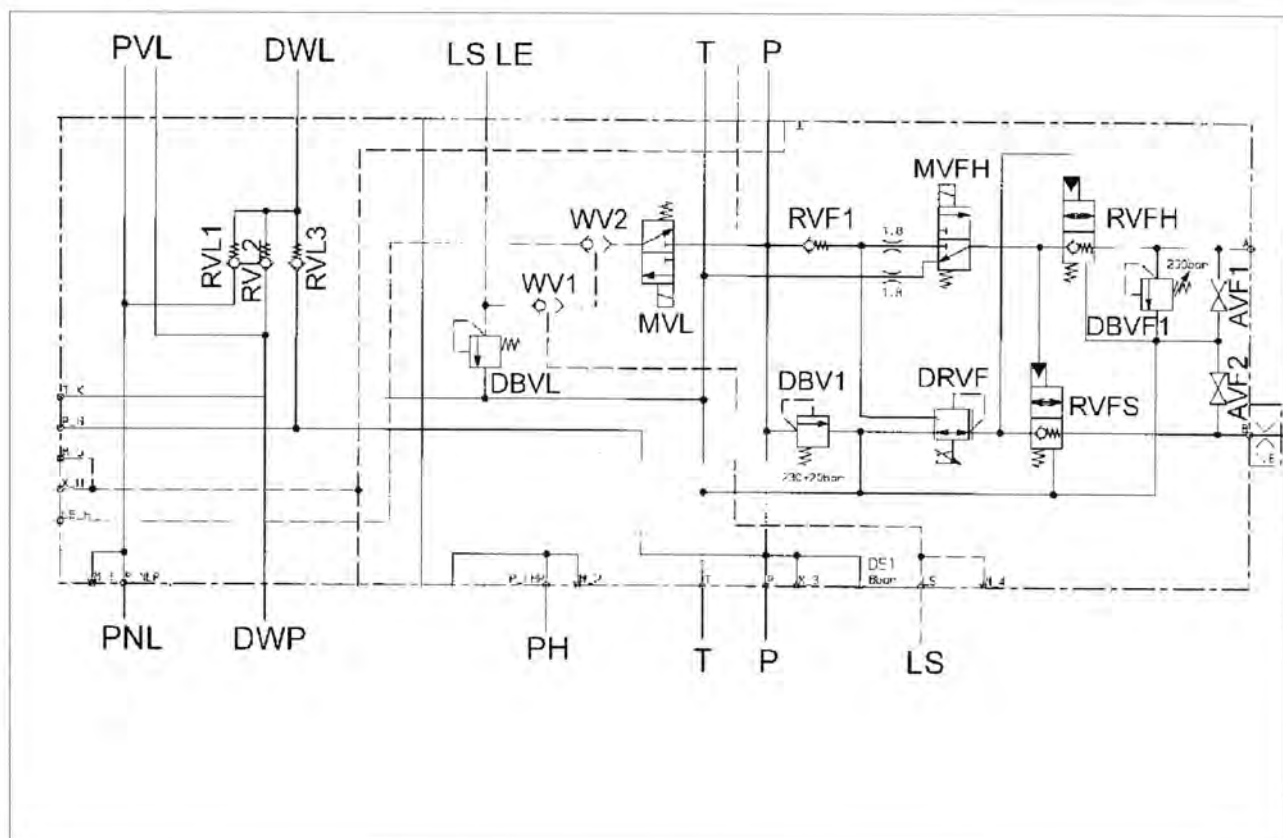


Fig. 1.

1001343

Vital hydraulic functions are integrated into the central control block. This keeps the number of hydraulic line connections to a minimum.

The central control block accommodates the following components:

- Non-return valves 1-3, steering (RVL1-3)
- Pressure-limiting valve, steering (DBVL)
- Shuttle valves 1+2 (WV1+2)
- Solenoid valve, charge function (MVL)
- Main pressure-limiting valve (DBV1)
- Non-return valve, suspension 1 (RVF1)
- Solenoid valve, raise suspension (MVFH)
- Pressure cut-off valve, suspension (DRVF)
- Non-return valves, raise/lower suspension (RVFH, RVFS)
- Pressure-limiting valve, suspension 1 (DBVF1)
- Stop valves, suspension 1+2 (AVF1 + AVF2)

The following components are flange-mounted to the central control block:

- Measuring connections 1-5 (M1-M5)
- Valve block, pilot pressure supply (VBP)
- Valve block, steering (VBL)
- EPC cut-off valve, front
- Control units SB 23 LS-EHS 2 for front connections
- End plate, centre (EPM)

919 .. 0101-1000  
919 .. 1001-  
922 .. 0101-1000  
922 .. 1001-  
925 .. 0101-1000

925 .. 1001-  
928 .. 0101-1000  
928 .. 1001-  
931 .. 0101-1000  
931 .. 1001-

934 .. 0101-1000  
934 .. 1001-

**T000452**  
Version 1  
30-01-2007

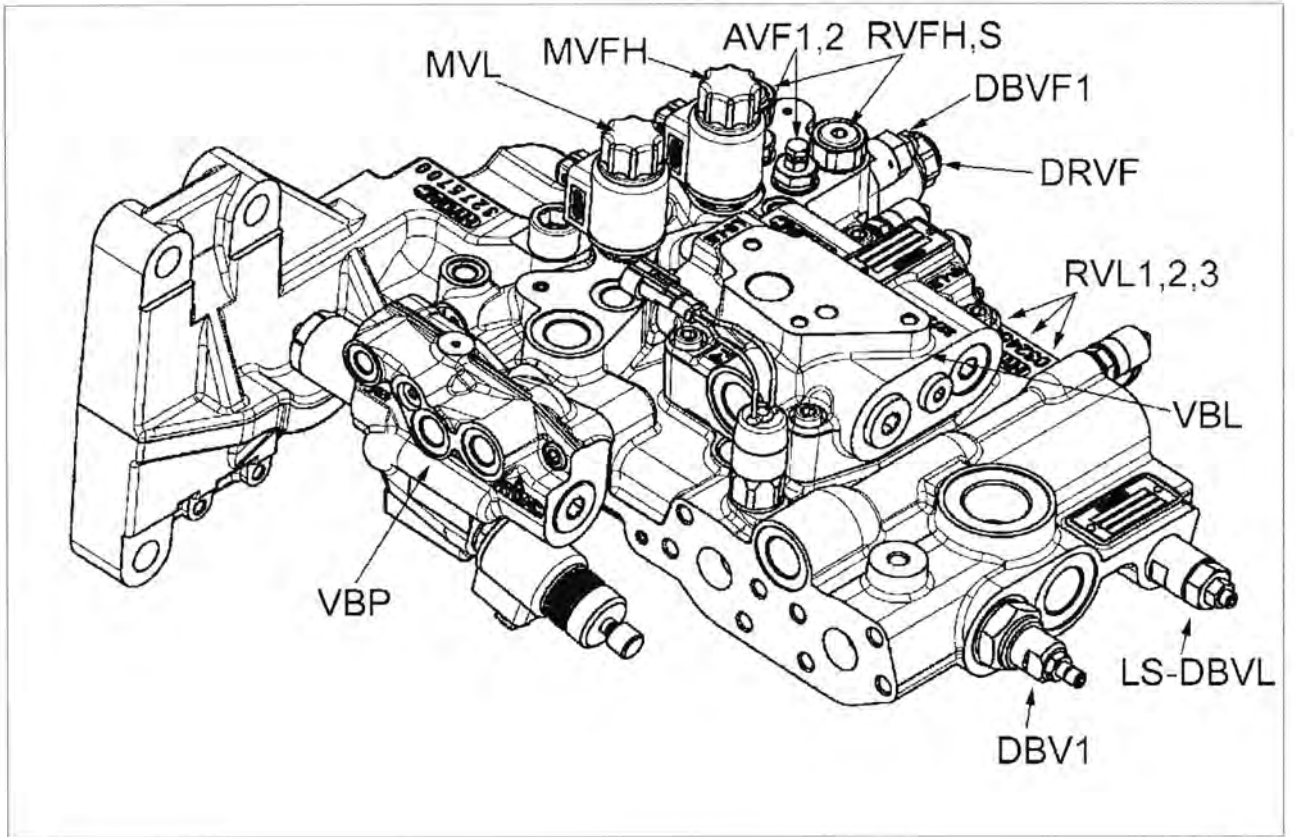


Fig. 2.

1001344